

GILL INFORMATION TECHNOLOGY

User Guide

Wake On LAN Manager Professional

GILL INFORMATION TECHNOLOGY

Wake On LAN Manager Professional Guide

1999 – 2005 © Gill Information Technology
Gill Information Technology,
PO Box 147,
Hounslow, TW5 9YW.
United Kingdom
Phone +44 (0)-7958-496-568

www.gillit.com

Email: wol@gillit.com

Table of Contents

<i>History</i>	<i>1</i>
<i>About WOL Manager</i>	<i>2</i>
<i>Acknowledgements</i>	<i>2</i>
<i>License agreement</i>	<i>3</i>
<i>Getting Started</i>	<i>5</i>
<i>Setup and Installation</i>	<i>7</i>
Installation from CD	7
Installation from website	7
.NET Framework	8
Installation	9
Select Installation Folder	10
Confirm Installation	11
Installation Complete	13
<i>Running WOL Manager for the first time</i>	<i>14</i>
<i>Configuring WOL Manager Professional</i>	<i>15</i>
Add PC	16
Edit PC	17
Wake Up	18
Managing databases	19
<i>Un-installation</i>	<i>20</i>
<i>Registering WOL Manager</i>	<i>21</i>
<i>Purchase Order</i>	<i>23</i>

History

The first version of WOL Manager Professional (WOL Manager) was developed in 2001. This version was not released and remained an internal software product at Gill Information Technology.

Later the same version was completely re-written in C# and the user interface enhanced. Whilst this was being worked on Gill Information Technology started to receive a number of enquires for the possibility of such an application from its existing ASD XP users.

With the release of WOL Manager Professional it is envisaged this will be the most popular and advanced WOL management application available.

About WOL Manager

Wake On LAN Manager Professional is one of the most advanced WOL applications on the market to date.

WOL Manager Professional enables multiple PCs to be powered up elegantly. This application can be used by administrators to provide greater flexibility, or simply to automatically boot up rooms of computers just before the start of the day.

The user interface of WOL Manager is easy to use, you will appreciate how intuitive it from the first time you use it.

Acknowledgements

I would like to thank all those who purchased a registered copy of WOL Manager Professional and supported its development.

Further I would to thank everyone who took the time to send feedback and suggestions to us. By using WOL Manager Professional you will see I have tried to integrate as many of the suggestions as possible.

License agreement

You should carefully read the following terms and conditions before using this software. Unless you have a different license agreement signed by Gill your use of this software indicates your acceptance of this license agreement and warranty.

Registered Version

One registered copy of Wake On LAN Manager Professional may either be used by a single person who uses the software personally on one computer, or installed on a single workstation used non-simultaneously by multiple people, but not both.

Access via a network

You may access the registered version of Wake On LAN Manager Professional through a network, provided that you have obtained individual licenses for the software covering all workstations that will access the software through the network.

For instance, if 5 different workstations will access Wake On LAN Manager Professional on the network, each workstation must have its own Wake On LAN Manager Professional license, regardless of whether they use Wake On LAN Manager Professional at different times or concurrently.

Governing Law

This agreement shall be governed by the laws of the United Kingdom

Disclaimer of Warranty

THIS SOFTWARE AND THE ACCOMPANYING FILES ARE SOLD "AS IS" AND WITHOUT WARRANTIES AS TO PERFORMANCE OR MERCHANTABILITY OR ANY OTHER WARRANTIES WHETHER EXPRESSED OR IMPLIED. Because of the various hardware and software environments into which Wake On LAN Manager Professional may be put, NO WARRANTY OF FITNESS FOR A PARTICULAR PURPOSE IS OFFERED.

Good data processing procedure dictates that any program be thoroughly tested with non-critical data before relying on it. The user must assume the entire risk of using the program. ANY LIABILITY OF THE SELLER WILL BE LIMITED EXCLUSIVELY TO PRODUCT REPLACEMENT OR REFUND OF PURCHASE PRICE.

Evaluation and Registration

This is not free software. Subject to the terms below, you are hereby licensed to use this software for evaluation purposes without charge for a period of 14 days. If you use this software after the 14 day evaluation period a registration fee is required. The latest fees are available from www.gillit.com.

Quantity discounts are available

Payments must be in UK pounds drawn on a UK bank, and should be sent to

R Gill
PO Box 147,
Hounslow, TW5 9YW.
United Kingdom

When payment is received you will be sent a registered copy of the latest version of Wake On LAN Manager Professional.

Unregistered use of Wake On LAN Manager Professional after the 14-day evaluation period is in violation of U.K. and international copyright laws.

Distribution

WAKE ON LAN MANAGER PROFESSIONAL

Provided that you verify that you are distributing the evaluation version you are hereby licensed to make as many copies of the evaluation version of this software and documentation as you wish; give exact copies of the original evaluation version to anyone; and distribute the evaluation version of the software and documentation in its unmodified form via electronic means.

You are specifically prohibited from charging, or requesting donations, for any such copies, however made; and from distributing the software and/or documentation with other products (commercial or otherwise) without prior written permission from Gill Information Technology.

Gill Information Technology
PO Box 147,
Hounslow, TW5 9YW.
United Kingdom

Getting Started

Information about WOL Manager Professional

This section details important information which needs to be considered when setting up WOL Manager Professional on your PC and network.

System Requirements

- At least an ATX 2.01 compliant power supply
- ATX Motherboard with a WOL connector
- Network cards must be WOL compliant with a connector
- BIOS must support WOL

How WOL Manager works

WOL Manager maintains a database of computer on your network. This database has all the information required for WOL Manager to boot up these computers. More than one database can be created to reflex the physical network organisation.

When a certain room of computers is required to start-up, the relevant database is loaded. Either all the computers are set to boot up or a selection.

Benefits

- Reduces disruption
- Maintenance carried out of core hours
- Flexibility
- Easy to use and configure
- Save Money
- No additional software needs to be purchased to use Wake On LAN Manager

Supported WOL Manager Platforms

Wake On LAN Manager Professional has been successfully tested on the following platforms:

- Windows XP
- Windows 2000

This application does function on Windows NT but the MAC addresses can not be automatically resolved and must be entered manually.

Targets computers to be woken up with this application can be:

- Windows 95/98
- Windows ME
- Windows NT
- Windows 2000
- Windows XP

Theoretically any PC which is WOL compliant can be woken up using this application.

Setup and Installation

Learn how to quickly install WOL Manager Professional

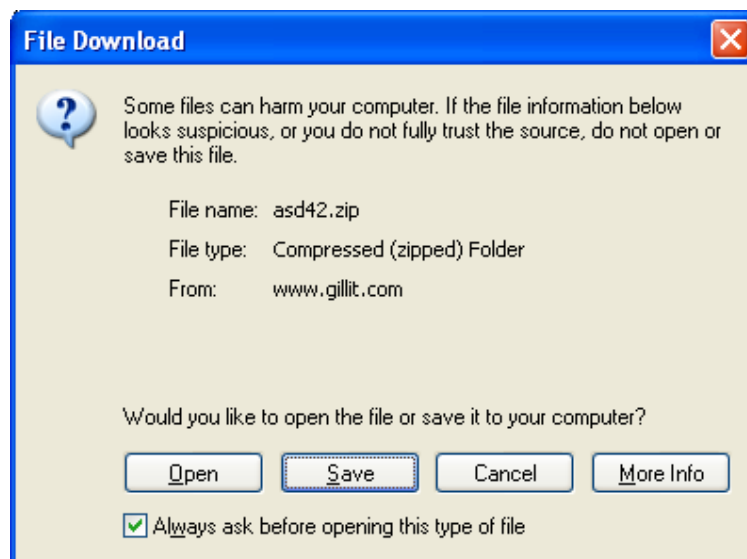
Installation of WOL Manager is a simple process. You may have WOL Manager on a CD or you could have downloaded the required files from the www.gillit.com website.

Installation from CD

- Make sure you are logged into Windows XP
- Insert the CD into the CD-ROM drive
- The installation application will start automatically

Installation from website

- Using your web browser; go to www.gillit.com/wol
- Select download
- Choose WOL Manager

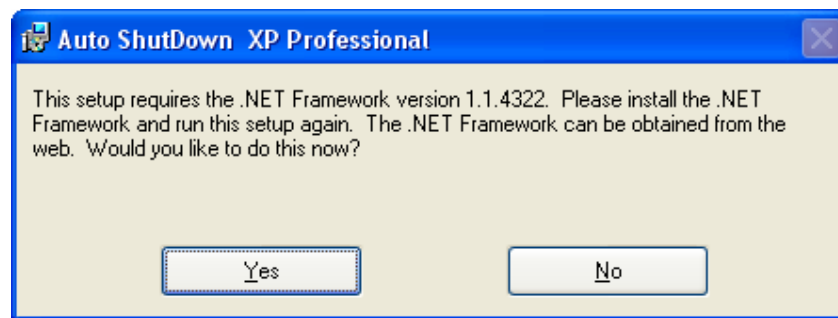


WAKE ON LAN MANAGER PROFESSIONAL

- The window on the previous page will be displayed. Select save to download the file to your PC.
- Once the download has completed select “open” from window that is displayed.

.NET Framework

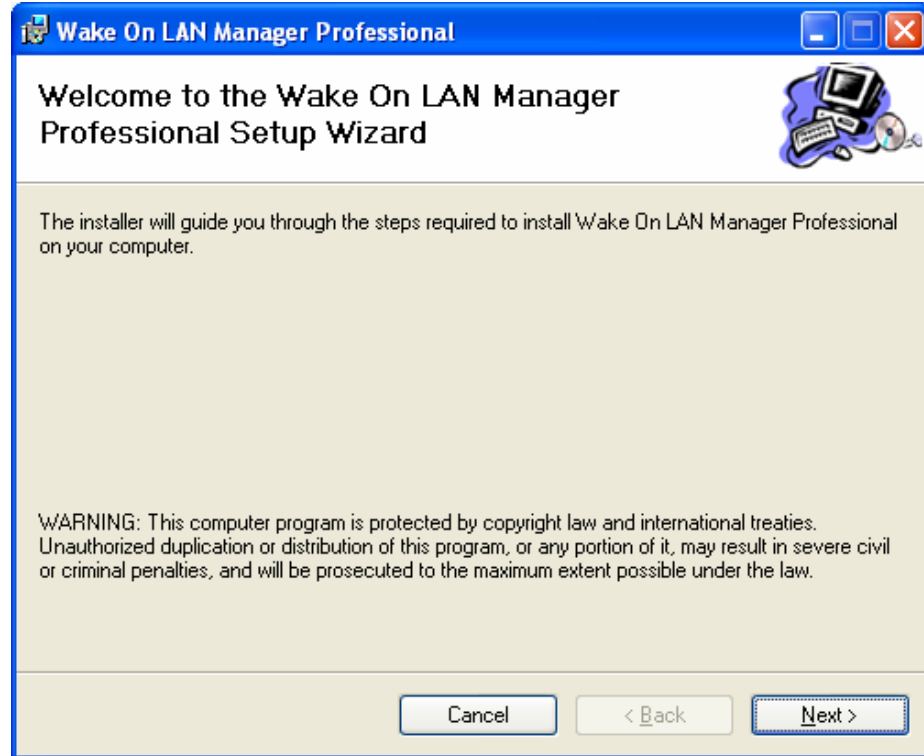
If the following screen is displayed, your PC needs the .NET framework to be installed before the Wake On LAN Manager installation can continue. Selecting yes will re-direct you to Microsoft’s website for the appropriate download and installation.



If you have a CD for Wake On LAN Manager a copy of this file has been placed on it. Open the CD and select dotnetfx.exe to install the redistributable package.

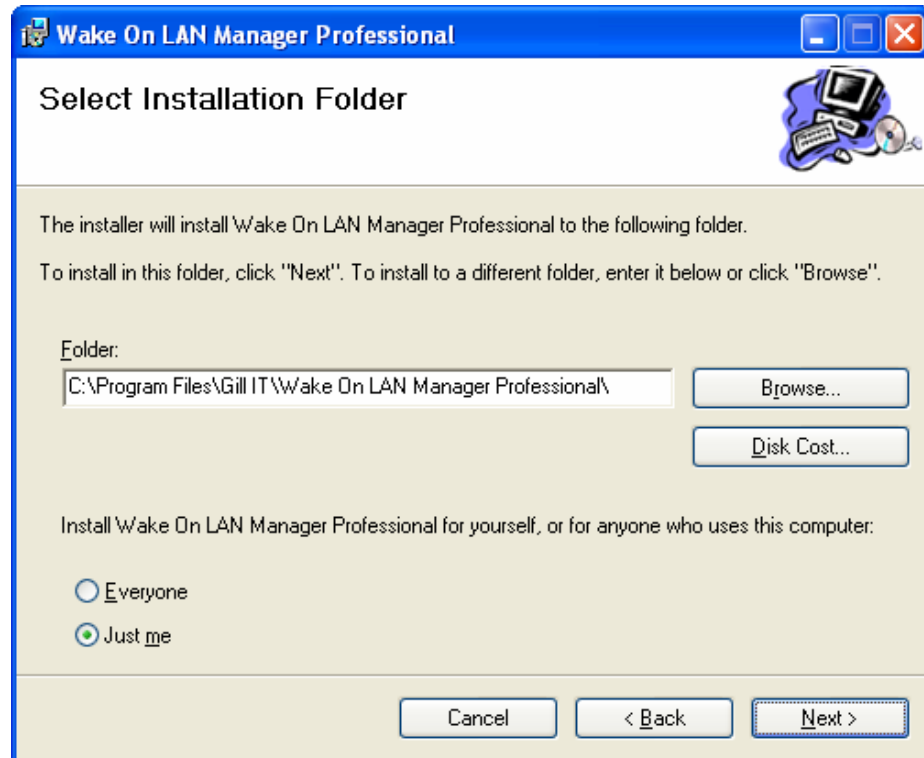
Installation

The following welcome screen will be displayed, select “next” to continue.



Select Installation Folder

In the following window select where Wake On LAN Manager will be installed too. For most people the default path is acceptable.



The next option is very important and determines who can run WOL Manager.

If “Just me” is selected, Wake On LAN Manager can only be configured by you – the one who installed it.

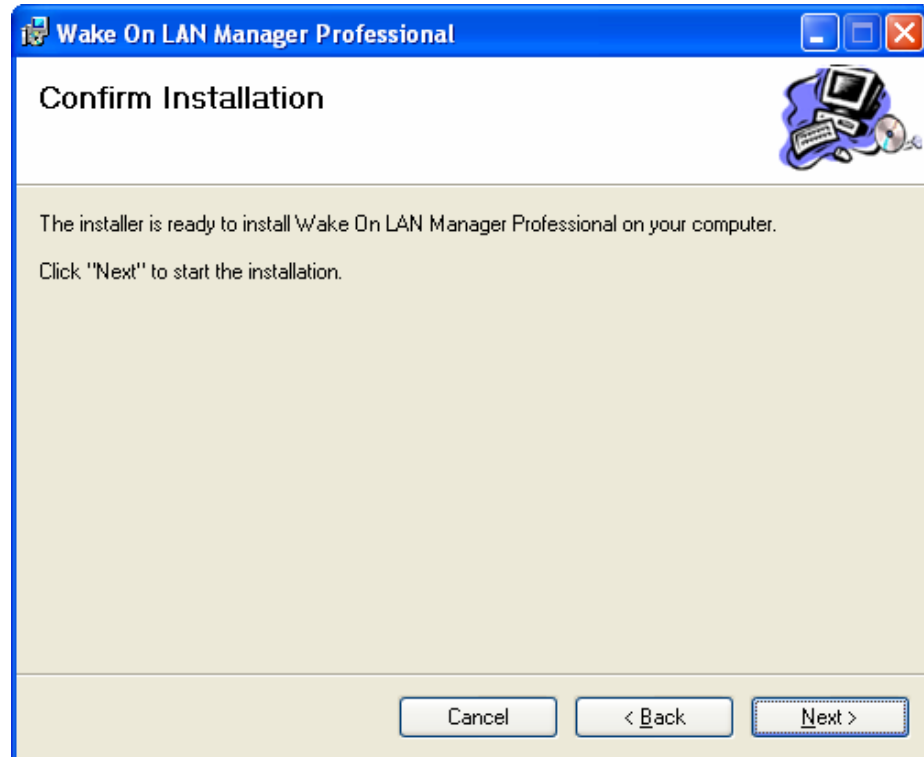
If “Everyone” is selected, Wake On LAN Manager can be configured by everyone who logs on to this PC.

Once you are happy with the options press “Next” to continue.

WAKE ON LAN MANAGER PROFESSIONAL

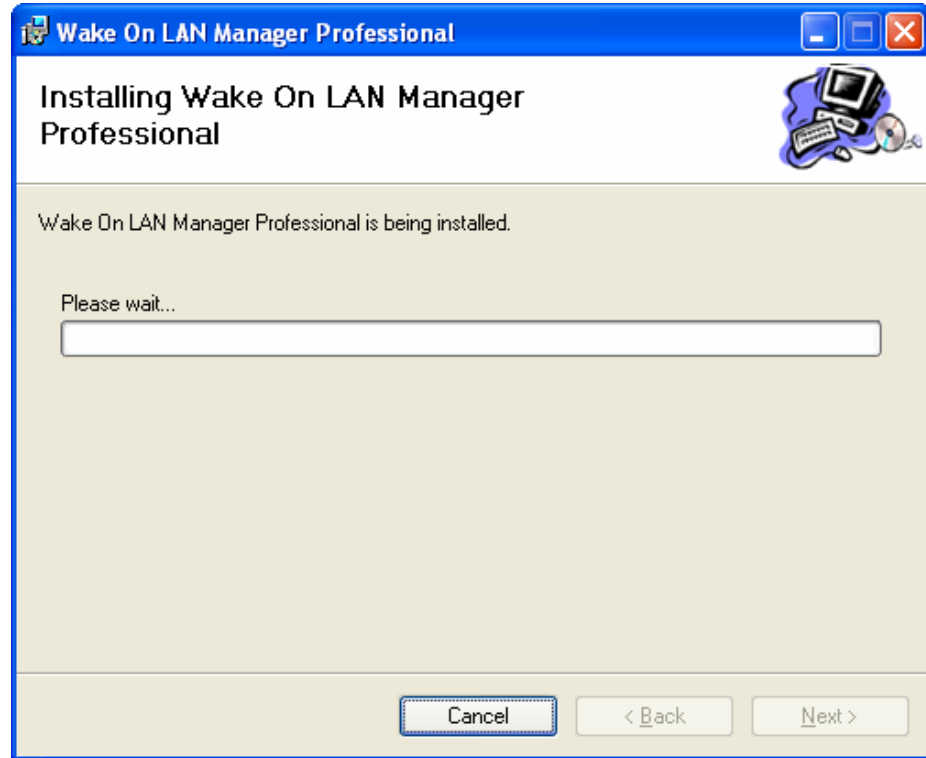
Confirm Installation

If you happy with the previous options and would like the installation to commence select "Next" otherwise select "Back" to make changes.



WAKE ON LAN MANAGER PROFESSIONAL

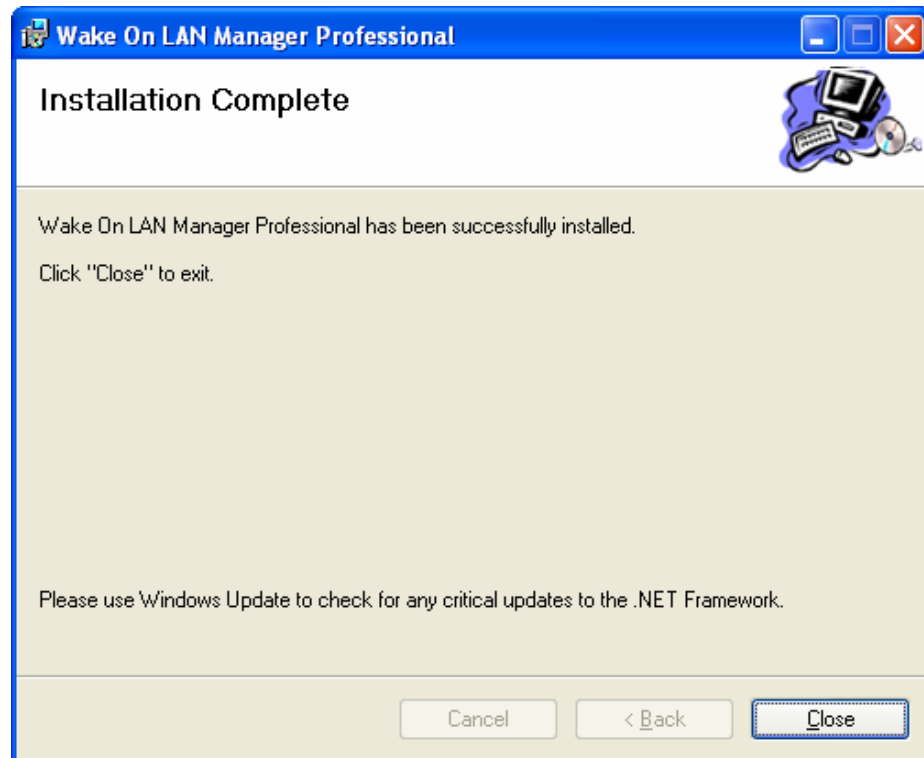
Installation will begin; the following window will be displayed while installation is in progress...



WAKE ON LAN MANAGER PROFESSIONAL

Installation Complete

Once the installation has completed the following window will be displayed



Running WOL Manager for the first time

How to configure WOL Manager and start utilising its functionality.

Once WOL Manager has just been installed, you can launch the application by pressing the “Start” button in Windows, then select “All Programs”. A new program group called “WOL Manager” would have been added. Select this and then select “WOL Manager” to launch the application. Alternatively double click the WOL Manager icon placed on the desktop.



A welcome screen will be displayed and shortly after the application will become visible. From here you can edit and customise the application to suite your requirements.

Add PC

When WOL Manager is launched for the first time there will be no computer details in its database. To add a computer select “Add PC” from the database menu or press the “Add PC” button from the toolbar.



The following form will be displayed:

A dialog box titled 'Add PC to database' with a close button (X) in the top right corner. The text inside says 'Please enter details of the computer on the LAN you would like to manage here.' There are four input fields: 'Computer Name' with a 'Browse' button to its right, 'MAC address' with a 'Resolve' button to its right, 'Port' with a dropdown menu showing '9', and 'Broadcast IP'. At the bottom are 'OK', 'Cancel', and 'Help' buttons.

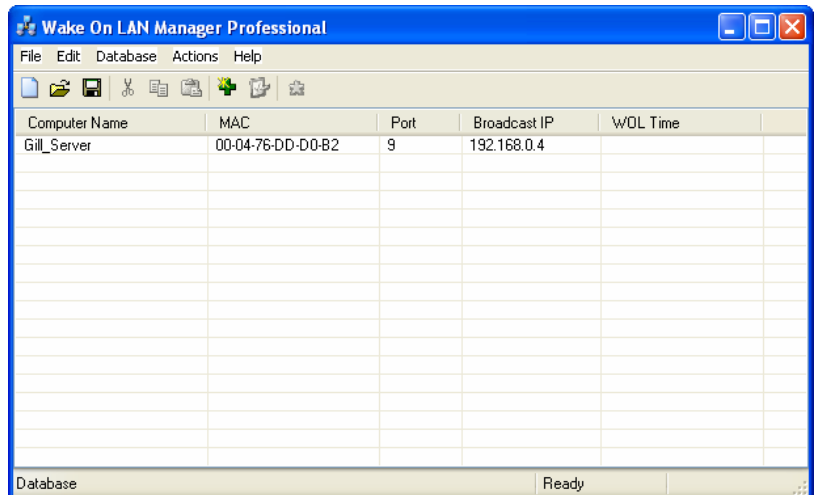
The form has four fields however the most important field is the "MAC address". Enter the computer name or press the "Browse" button to search for it.

Press the "Resolve" button to determine the MAC address and IP address.

If you want to send a broadcast to a subnet rather than to a specific IP address adjust the IP address accordingly.

The port number should not make a difference and can usually be left unchanged. However if you have configured your router to allow subnet broadcasts, this port number should reflect this.

Once the “OK” button has been pressed the PC details will be added to the current database and will be visible in the main window.



Edit PC

An existing PC can be modified by:

- Selecting a computer in WOL Manager and pressing CTRL + E
- Pressing the Edit PC button in the tool bar
- Selecting "Edit PC" from the "Database" menu
- Double clicking a computer in the WOL Manager

The following form will be displayed:

Editing Gill_Server

Please enter details of the computer on the LAN you would like to manage here.

Computer Name: Gill_Server [Browse]

MAC address: 00-04-76-DD-D0-B2 [Resolve]

Port: 9

Broadcast IP: 192.168.0.4

[OK] [Cancel] [Help]

Once you have made the changes press the "OK" button.

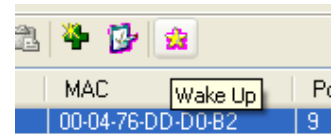
Wake Up

There are a few methods to wake up a computer which have been added to the WOL Manager database.

1. Computers can be woken up individually
2. All the selected computers can be woken up
3. All the computers in the database can be woken up

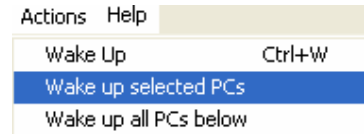
Individually

To wake up a single computer from the database, first select it. Then press the wake up button in the tool bar. Alternatively you can press the right mouse button and choose “Wake Up” from the options.



Selected computers

To wake up a set of computers from the database, first select them with the mouse. Then select “Wake up selected PCs” from the “Actions” menu.



All computers

To wake up all the computers in the database, select “Wake up all PCs below” from “the Actions” menu. It can take time a few minutes for all the computers to be woken up and this will be affected how busy the network is.

Managing databases

The file menu has a number of options to enable easy management of WOL Manager Databases.

1. New: Create a new WOL Database
2. Open: Open an existing WOL Database
3. Save: Save the current WOL Database
4. Save As: Save the current WOL Database with a new name
5. Import: Import another WOL Database into the current database

Un-installation

How to remove WOL Manager from your PC

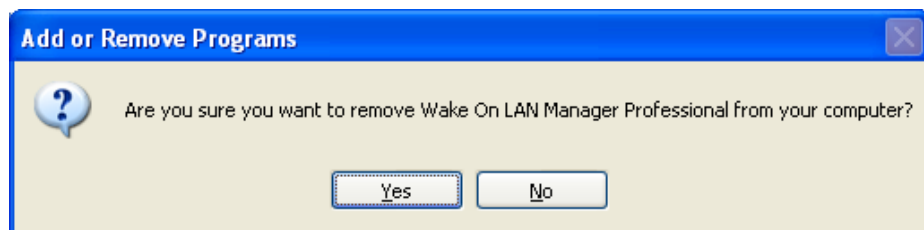
To un-install WOL Manager first ensure the application is not running. You can check to see if it is running by looking at the task bar.

If the application is present, save any work which you do not wish to lose then select the File menu and select Exit from the menu.

Now launch the control panels from the Start menu. Then select Add remove programs. A new window will open listing all the installed applications on your PC. Scroll through the list until you find Wake On LAN Manager Professional.



Select Wake On LAN Manager Professional once; two new buttons will appear – Change and Remove. Click the Remove button, the following screen will be displayed.



Selecting “Yes” will completely remove WOL Manager from your PC.

Registering WOL Manager

If you haven't already registered, you can register in the following ways:

On-line at

<http://www.gillit.com/wol/purchase.html>

The following credit cards are accepted:

American Express

Discover

MasterCard

Visa



If you would like to fax, wire transfer or a purchase order please go to the above site and read "other ordering methods" section.

Educational Institutions and charities

These institutes qualify for a discount. Please use the following form for on-line payment:

<http://www.gillit.com/wol/purchase.html>

Cheque

If you would like to pay by cheque you can send the cheque directly to us. Please fill out the form on the following page and send it to:

PO Box 147,
Hounslow, TW5 9YW.
United Kingdom

Make sure the cheque is Payable to R Gill.

Optional CD

If you would like WOL Manager to also be supplied on CD please visit:

<http://www.gillit.com/wol/purchase.html>

Alternatively add the appropriate amount to the cheque and send it to the above address.

Reregistered version

Registered versions of WOL Manager are usually dispatched within 3 days of receipt of the order. At most the order can take up to 14 days to process if demand is high.

Purchase Order

Your Details

Name: _____ Date: ___/___/___

Company: _____

Address: _____

Post Code _____

Country _____

Tel: _____

Email: _____

Comments _____

Quantity	Description	Unit Price	Total
	Wake On LAN Manager Professional		
	Wake On LAN Manager Professional CD		
Total			

For the latest prices please see www.gillit.com

Authorising Signature

_____ (Please print name and position)

Once complete please send this form along with a cheque to:

R Gill
PO Box 147,
Hounslow, TW5 9YW.
United Kingdom

Index

.NET Framework.....	8
A	
Acknowledgements.....	2
Add PC.....	16
All computers.....	18
ATX Motherboard.....	5
B	
Benefits.....	6
BIOS.....	5
C	
Configuring WOL Manager.....	15
D	
dotnetfx.exe.....	8
E	
Edit PC.....	17
Everyone.....	10
H	
History.....	1
I	
Import.....	19
Individually.....	18
Installation Folder.....	10
interface.....	15
IP address.....	16
J	
Just me.....	10
L	
License agreement.....	3
M	
MAC address.....	16
Managing databases.....	19
N	
New.....	19
O	
Open.....	19
P	
Platforms.....	6
R	
Registering WOL Manager.....	21
Resolve.....	16
S	
Save.....	19
Save As.....	19
Selected computers.....	18
Setup and Installation.....	7
U	
Un-installation.....	20
W	
Wake Up.....	18

User Notes